

# A Hat Inspired by Sansa to Knit

KATRINA KING

## Key

 k

 p

 yo

 k2tog

 ssk

 k3tog


 sssk

 sl 1, k2tog, pssso

 M1R

 [k1, yo, k1] into same st


 k2tog and pb

 ssk and pb

 k3tog and pb

 sssk and pb

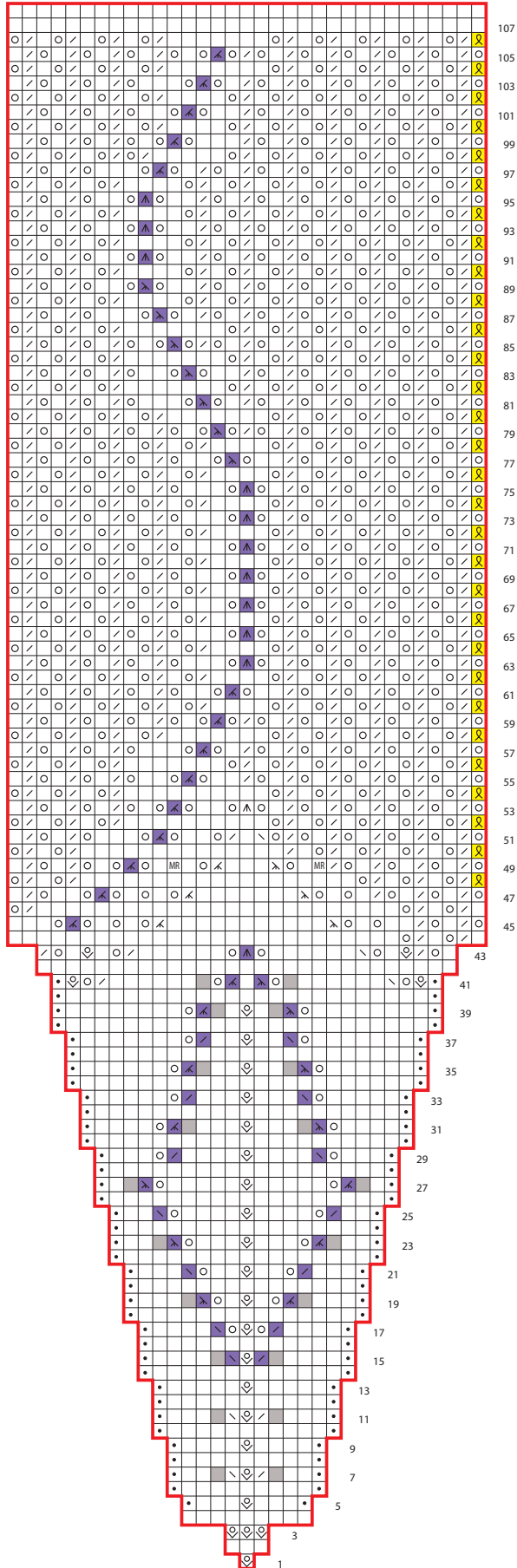
 sl 1, k2tog, pssso and pb

 k1tbl on 1<sup>st</sup> rep only; k1 on all other reps

 no st

 patt rep

Snood



1 st to 33 st repeat