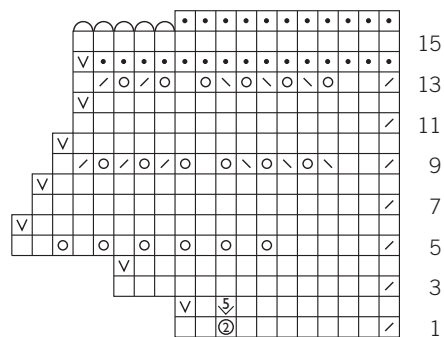




MRS. BINGLEY'S SHAWLETTE

Adrienne Lash
p. 107-108

Edging



11 sts to 19 sts to 11 sts

Key

- ☐ k on RS; p on WS
- ☐ • p on RS; k on WS
- ☐ o yo
- ☐ ② yo, wrapping yarn around needle twice
- ☐ / k2tog
- ☐ \ skp
- ☐ 5 1-to-5 Inc (see Stitch Guide)
- ☐ v sl 1 pwise wyf on WS
- ☐ C BO 1 st kwise on WS (see Notes)