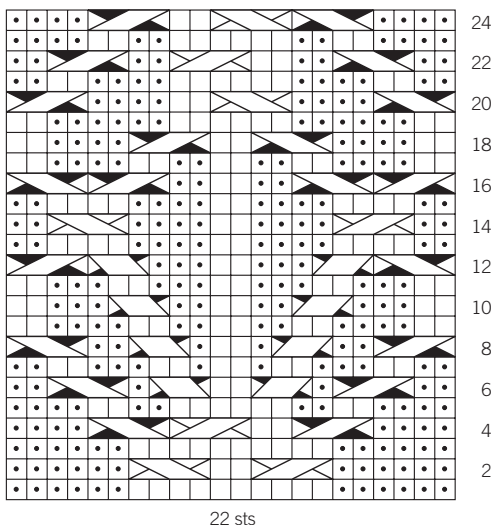




## COLONEL BRANDON

Kathleen Dames  
p. 38-40

### Hartshorn Cable



#### Key

□ k on RS; p on WS

• p on RS; k on WS

□ pattern repeat

⌞ sl 1 st onto cn, hold in back, k1, k1 from cn

⌞ sl 1 st onto cn, hold in front, k1, k1 from cn

⌞ sl 1 st onto cn, hold in back, k2, p1 from cn

⌞ sl 2 sts onto cn, hold in front, p1, k2 from cn

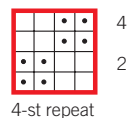
⌞ sl 2 sts onto cn, hold in back, k2, p2 from cn

⌞ sl 2 sts onto cn, hold in front, p2, k2 from cn

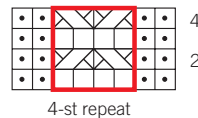
⌞ sl 2 sts onto cn, hold in back, k2, k2 from cn

⌞ sl 2 sts onto cn, hold in front, k2, k2 from cn

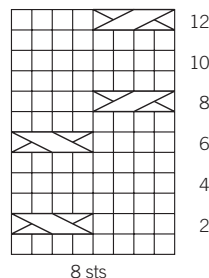
### Double Moss Stitch



### Wave of Honey Cable



### Left Alternating Cable



### Right Alternating Cable

